

# JIMTOF 2024

DMG MORI

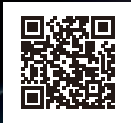
November 5-10, 2024 (Tue-Sun)

Tokyo Big Sight ▶ East Hall 8 10:00 - 18:00\*

▶ South Hall 1 9:00 - 17:00\*

\*Only until 4:00 p.m. on last day (10th)

MX  
MACHINING  
TRANSFORMATION



## DMG MORI MX MACHINING TRANSFORMATION

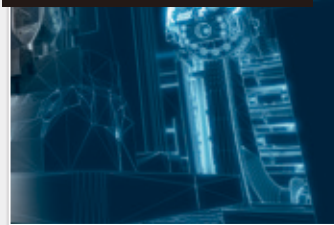
Process Integration



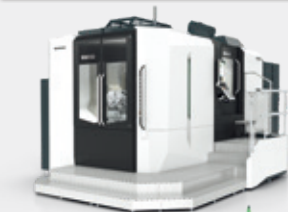
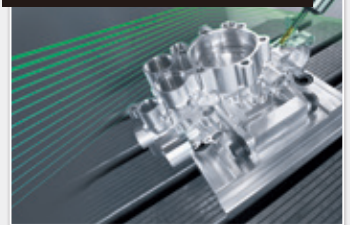
Automation



DX (Digital Transformation)



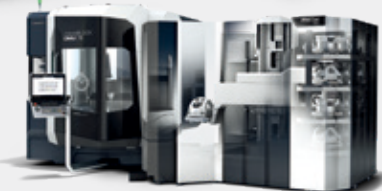
GX (Green Transformation)



INH 63



AMR 2000



DMU 65 monoBLOCK 2<sup>nd</sup> Generation with PH Cell 500



MAPPS



CELOS X



SIEMENS



HEIDENHAIN

ERGoline X with CELOS X

### Japan Premiere: High-Efficiency Machine Tools for Process Integration

+ NLX 2500 2<sup>nd</sup> Generation with MATRIS Light (World Premiere)

+ INH 63 with AMR 2000

+ DMU 65 monoBLOCK 2<sup>nd</sup> Generation with PH Cell 500

+ LASERTEC 30 SLM 3<sup>rd</sup> Generation (Exhibited in South Hall 1)

+ LASERTEC 3000 | 3000 DED hybrid (World Premiere)

+ NMV 5000 Gear Production+ with AMR (World Premiere)



## TAIYO KOKI

- + Best-seller machine "Vertical Mate" available with new design

## DMG MORI

PRECISION BORING

- + Reference exhibit of first newly developed Horizontal Machining Center since joining the DMG MORI Group

## Magnescale

- +  $\mu$ MATE +: Wireless digital gauge to support DX of measurements

## TECHNIUM

- + Newly launched e-commerce site my DMG MORI eMarket



## T Project

- + TULIP: DX platform for frontline operations

## walc

- + WALC CARE: Advanced diagnostics for early problem detection and preventive machine maintenance



Volumetric Accuracy Research Institute Co., Ltd.

- + Enhanced precision: Unique measurement technologies for volumetric accuracy and other parameters

### DMQP Partner Area

### Exhibit of Excellent Peripheral Equipment from Japan and Abroad



- + DMG MORI's one-stop service also provides optimal tools, fixtures, CAM, and other peripheral equipment



DMQP: DMG MORI Qualified Product

### The Cutting Dream Contest Awards 2024



- + Each piece reflects exceptional technical skill and innovative ideas
- + All submitted works are displayed at the booth



### Special Concurrent Exhibition: Additive Manufacturing

Venue: South Hall 1

- + Japan premiere of LASERTEC 30 SLM 3<sup>rd</sup> Generation with live machining demonstration
- + Showcasing a variety of workpieces and specific use cases



Head part of industrial robot



Blade

• Workpiece photos are for illustrative purposes only and may differ from the actual exhibit.

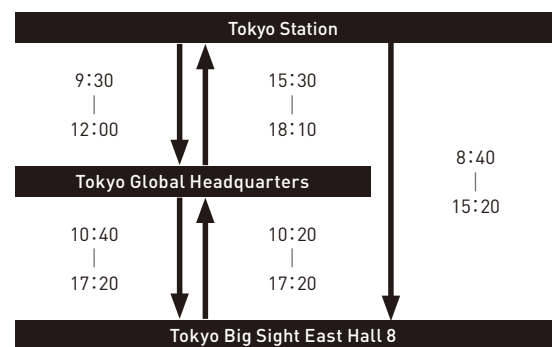
### Tokyo Global Headquarters Technology Week

- + World premiere of NLX 2500 2<sup>nd</sup> Generation
- + Live machining demonstrations with the latest 5-axis machines and mill-turn centers
- + Conducted by advance reservation only



Held simultaneously!

### Free shuttle bus available



### DMG MORI CO., LTD.

Tokyo Global Headquarters □ 2-3-23, Shiomi, Koto-ku, Tokyo 135-0052, Japan Phone: +81-3-6758-5900  
Nara Product Development Center □ 2-1 Sanjohonmachi, Nara City, Nara 630-8122, Japan Phone: +81-742-90-0400 (Second Headquarters)

# DMG MORI