

Press release

January 23rd, 2024

DMG MORI Open House Pfronten 2024

We are holding our annual DMG MORI Open House at Pfronten Plant in Germany - our largest development and production site in Europe. Starting on January 22nd, the in-house exhibition will last over 10 days*¹, until February 2nd, 2024.

50% of our orders come from European customers with advanced productions. Accordingly, our Pfronten Plant specializes in the manufacture of cutting-edge 5-axis and laser technology machines, which are in high demand from growth industries such as aerospace, molds, medical, and semiconductors.

This year's theme revolves around Machining Transformation (MX). We aim to achieve this transformation by promoting process integration and automation through digital transformation (DX), ultimately leading to a green transformation (GX).

The Open House 2024 exhibition spans over 4,200 m², featuring over 45 machine models, more than 20 automation systems, and digital solutions. One highlight is the world premiere of the "DMF 400|11," our brand-new travelling column machining center with 20% higher rigidity and 1.1 m³ larger machining area.

During our exhibition, we also offer daily plant tours and seminars on our latest products. In addition, our DMQP (DMG MORI Qualified Products) partners are also available with dedicated booths to present their state-of-the-art products and technologies for higher productivity.

We are expecting more than 7,000 guests from 35 countries and around 400 students, who can also enjoy the local Bavarian cuisine at our exhibition's "Almhütte," a German alpine hut-themed restaurant.

We look forward to your visit!*²

- Find more information on Open House Pfronten 2024 here:
<https://event.dmgmori.com/en/events/oh-pfronten-2024>
- Visit the digital version of our exhibition here:
https://www.dmgmori.co.jp/sp/dtsr/OH_Pfronten2024/

*1 Only open on weekdays. *2 Visits require online registration in advance.

Highlights of Open House Pfronten 2024

Process Integration

- ✓ World premiere of travelling column machining center “**DMF 400|11**”
+ 20% rigidity and 1.1 m³ larger machining area than previous model
- ✓ High-precision 5-axis control machining center “**INH 63 / INH 80**”

Automation

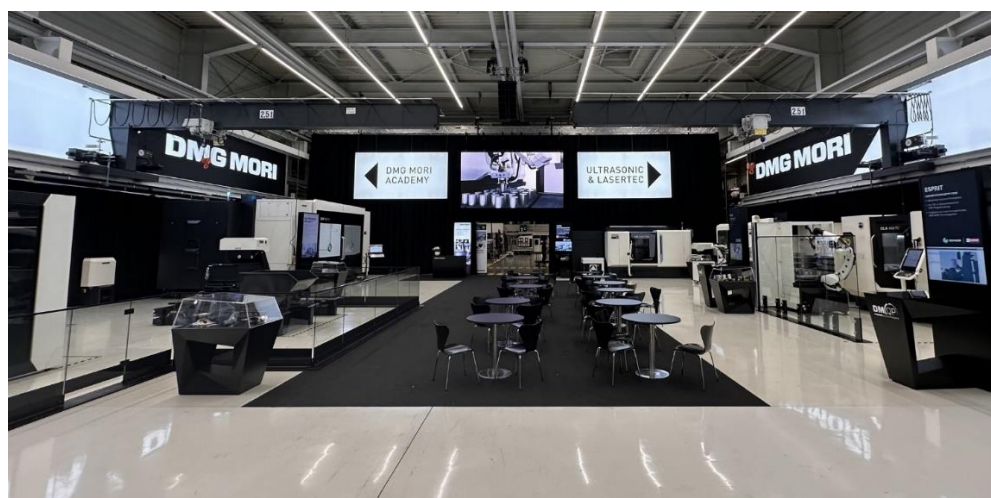
- ✓ Modular pallet handling system “**PH Cell 500**”
Compact size, max. workpiece dimension: 500 × 500 × 750 mm, max. transport weight: 500 kg

Digital Transformation (DX)

- ✓ New intuitive operation panel “**CELOS X**”



Pfronten Plant



DMG MORI's latest products and technologies on display



World premiere of DMF 400|11



Alpine hut-themed restaurant with Bavarian cuisine