

Press Release

October 20, 2014

New Operating System CELOS Mounted on All JIMTOF2014 Display Models

DMG MORI SEIKI CO., LTD. (hereinafter called DMG MORI SEIKI) will showcase its latest models, which are all equipped with the new operating system CELOS (except mass-production machines) at JIMTOF2014 that will take place from October 30 (Thu), 2014. We will set up the CELOS area where visitors can experience the system on-site, and introduce the operability and functions.

The CELOS, boasting its futuristic design and the industry's first touch panel operation, is the cutting-edge operating system jointly developed with our business partner DMG MORI SEIKI AKTIENGESELLSCHAFT. It was first unveiled at EMO Hannover in 2013, and began being mounted on most of the DMG MORI machines. The CELOS employs the ERGOline Touch (hardware) as an operation panel that operates a machine tool, and simplifies the processes from the idea to the finished product, thereby drastically reducing machining time including setup times.

The DMG MORI SEIKI's original and cutting-edge technologies and the industry's first functions, such as connection with various systems and expansion of applications, have totally changed operability of machine tools in use today. We would like to highlight the features of CELOS from perspectives of (1) Application, (2) MAPPS V, (3) Operability, (4) Energy saving, and (5) Safety.



(1) Application

The CELOS is equipped with CELOS applications (hereinafter called CELOS APPS) that enable easy operation. CELOS APPS consist of following 12 applications including JOB MANAGER to manager machining information and NC programs; JOB ASSISTANT to support setups; and DOCUMENTS to manage manuals and documents in a library style. All the applications are categorized by function, and the operators can quickly start an application from the Application Menu with one touch, as the same way they handle a smart phone.



APP MENU



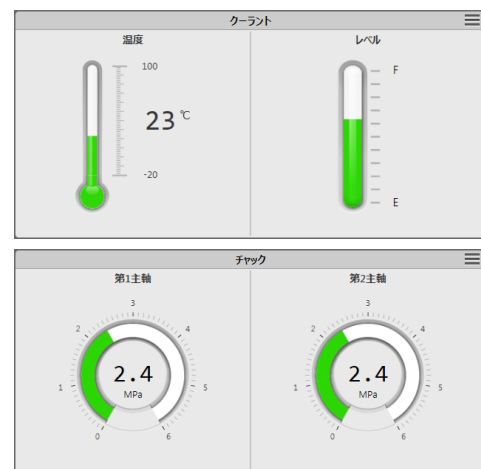
JOB MANAGER

(2) MAPPS V

The MAPPS V, newly developed application software is available on the CELOS. The operators can start up the MAPPS V, the fifth generation of MAPPS series, through the CELOS APPS screen. With the MAPPS V, NC programs can be managed, and machine operation settings are done. The MAPPS V has the function to split the screen into 6 windows, which enables the operators to display the necessary information at the same time. It is also equipped with the new sensor information display function in addition to the MAPPS series' popular automatic conversational programming function, the 3D interference checking function and the tool management function. With the latest sensing network (MNNS: Mori Neural Network System), operators can monitor sensor information to check machine status on the screen through various sensors arranged on a machine.



MAPPS V Screen



Sensor Information Display Function

(3) Operability

The ERGOline Touch is the only one in the industry which uses a multi-touch operation panel on the upper and lower panels. On the upper monitor with a large 21.5-inch screen, application icons are arranged. The monitor also displays APPLICATION MENU to start an application, and CELOS STATUS MONITOR to visually check a status of a machine in operation and job progress. The lower monitor is a control panel. As with the upper monitor, it employs multi-touch operation and displays a keyboard and buttons only necessary for machine operation according to the machining mode of machining centers and multi-axis machines. The operators can input information as they do with PCs and adjust the position and angle of the operation panel according to their ease of use. Taking into account customers heading for globalization, the ERGOline Touch is equipped with the voice notification function and made available in 34 languages.



APP MENU



Multi-Touch Control Pane

(4) Energy Saving

The operators are able to configure the energy-saving settings and visually check the effects on the CELOS screen, which is the industry's first function. The CELOS automatically stops machines in standby mode to reduce power consumption of machines.

- ENERGY MONITOR screen

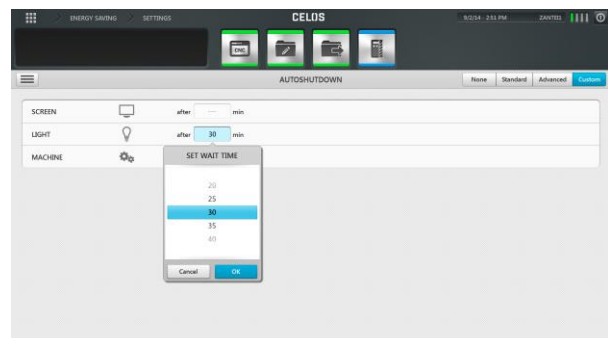
Display of operation hours (h), power consumption (kWh) and CO2 emissions (kg) can be switched. Electricity rate can also be checked on each of the screen.

- AUTO shutdown screen

On the CELOS the operators can configure the settings to automatically shut off the screen back light, internal machine lighting and power when a machine is not used for a certain period of time.



ENERGY Monitor



Auto Shutdown

(5) Safety

The ERGO*line* Touch comes with DMG SMARTkey® equipped with the personalized operator authorization function to set access privileges to machine operation. Each DMG SMARTkey® has an operation mode set according to the operator's skill, and access level information is registered in a machine. So access privilege can be individually set for each operator. In addition, as the DMG SMARTkey® has the USB memory function, it enables the operators to smoothly exchange data with various systems.



DMG SMARTkey®

DMG MORI SEIKI will continue to provide products that are reliable, highly functional and worthy of investment to meet each and every customer's needs.